

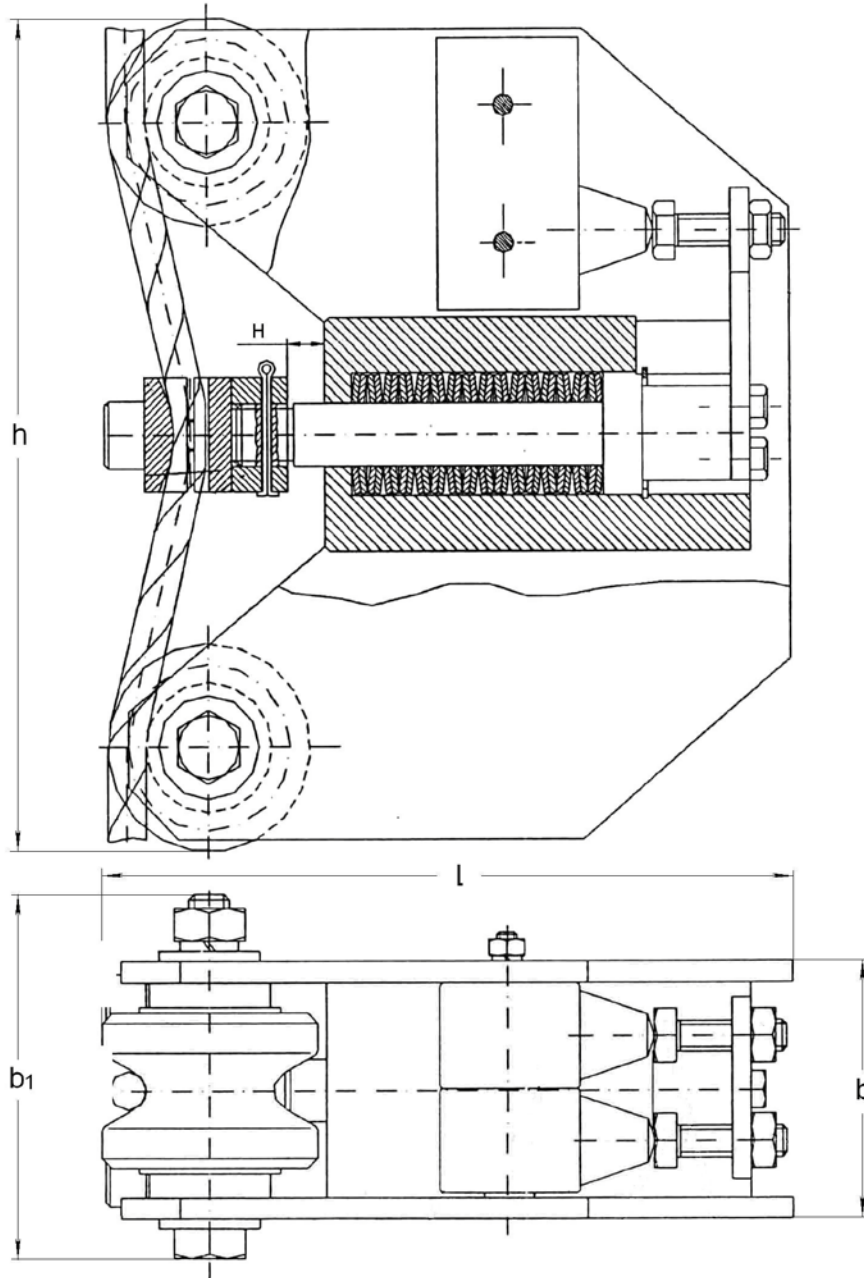


Overload limiter type BOT

Technical data

Type	Rated load S_N		Rated stroke by S_N		Rated stroke by $1.1S_N$		Rated stroke by $1.25S_N$		Limits mm
	kg	lbs	mm	inch	mm	inch	mm	inch	
BOT050	500	1,100	2.59	1.102	2.88	0.113	3.24	0.128	2.20-3.73
BOT110	1,135	2,500	2.27	0.089	2.52	0.099	2.83	0.111	1.93-3.25
BOT160	1,600	3,500	2.41	0.095	2.68	0.106	3.01	0.118	2.05-3.46
BOT250	2,500	5,500	2.41	0.095	2.68	0.106	3.01	0.118	2.05-3.46
BOT400	4,000	8,800	2.45	0.096	2.72	0.107	3.06	0.120	2.08-3.52
BOT500	5,000	11,000	2.34	0.092	2.60	0.102	2.93	0.115	2.00-3.37
BOT630	6,300	13,850	2.92	0.115	3.10	0.122	3.60	0.142	2.48-3.75

Overall dimensions



Type	b		b ₁		h		l		Weight
	mm	inch	mm	inch	mm	inch	mm	inch	lbs
BOT 050, 110, 160	62	2.44	80	3.14	207	8.15	160	6.30	11
BOT 250, 400, 500, 630	80	3.14	108	4.25	294	11.57	187	7.36	28